

Taper Types (m)	Regulatory Speed Limit before Work Begins (km/h)	Regulatory Speed Limit before Work Begins (km/h)							
		≤ 50	60	70	80	90	100	110	120
Merge Taper Length	L _M	35	55	160	190	210	230	250	280
Lane Shift Taper Length	L _L	30	50	80	100	110	120	130	140
Downstream Taper Length	L _D	30	30	30	30	30	30	30	30
TCP, Signal, and Shoulder Taper Length (min. 5 devices)	L _T	5	8	15	15	15	15	15	15
Minimum Tangent Length between Tapers	L _T	30	60	160	190	210	230	250	280
Run-In Length on Centreline	L _L	40	50	60	60	70	80	90	100

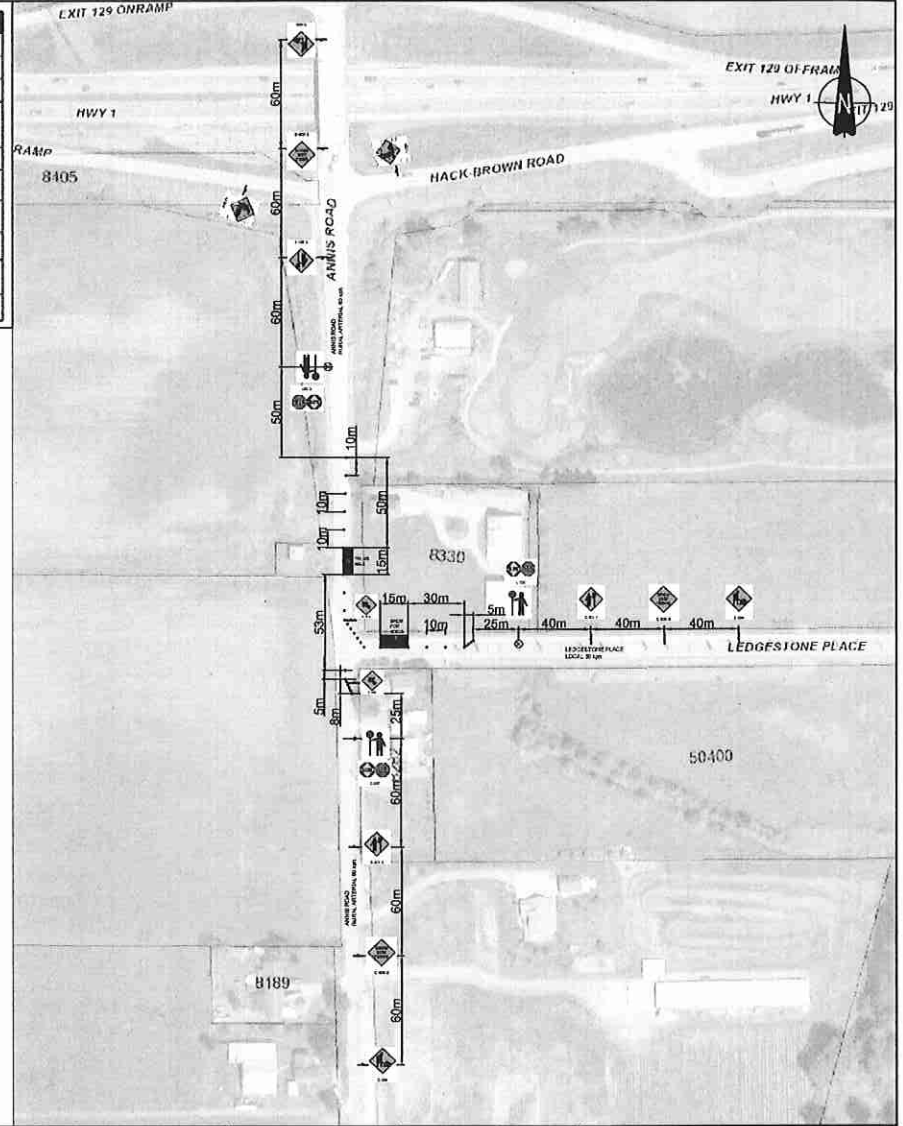
Device Spacing (m)	Regulatory Speed Limit before Work Begins (km/h)	Regulatory Speed Limit before Work Begins (km/h)							
		≤ 50	60	70	80	90	100	110	120
Construction Sign Spacing	A	40	60	80	100	150	150	200	200
Buffer Space	B	30	40	60	80	110	140	170	200
Channelizing Device Spacing for Tapers	C	10	10	15	15	15	15	15	15
Channelizing Device Spacing on Curves and Tangents	D	10	10	30	30	40	40	40	50

NOTES:

1. THE WORK REQUIRING THE TRAFFIC CONTROL MEASURE INVOLVES THE PLACING AND SPLICING OF FIBER OPTIC CABLE FROM MH 6 TO THE FDH CABINET LOCATED APPROX. 30m EAST OF THE INTERSECTION ON THE NORTH SIDE OF LEDGESTONE PLACE .
2. THE WORK WILL REQUIRE THE CLOSURE OF THE N/B RIGHT LANE AS NOTED IN THIS LAYOUT. THE DURATION OF THIS MEASURE WILL BE UNTIL THE COMPLETION OF THE WORK.
3. TIMING OF THE WORKS WILL BE MONDAY TO FRIDAY FROM 7:00 AM TO 3:00 PM.
4. LOCATION OF THE WORK ZONE IS AS INDICATED ON THIS PLAN FOR CONSTRUCTION.
5. PEDESTRIAN TRAFFIC WILL BE GUIDED THROUGH THE WORK ZONE BY TCP.
6. THE MEASURES SHOWN IN THIS TRAFFIC MANAGEMENT PLAN IS IN ACCORDANCE TO THE " BC TRAFFIC MANAGEMENT MANUAL FOR WORK ON ROADWAYS (2015 INTERIM VERSION) ". CHANGES TO THIS LAYOUT MAY BE MADE BY THE TRAFFIC CONTROL PERSON IN CHARGE TO REFLECT FIELD CONDITIONS..
7. PRIORITY ACCESS WILL BE GIVEN TO EMERGENCY VEHICLES.
8. ALL DIMENSIONS ARE IN METRES.

CONTACT INFORMATION:
 SITE FOREMAN:
 SHANE BELFRY O: 604-283-6527
 C: 778-870-9562

	Flexible Drum		Paint Truck
	Tubular Marker		Escort Truck
	Cone		Chaser Vehicle
	Sign		Vehicle Mounted Rear Crash Attenuator
	Traffic Control Person		360° Flashing Light
	Work Activity Area		Portable Traffic Signal
	Work Truck		Barricade and Fencing
	Shadow Vehicle		Flashing Arrow Board (FAB)
	Shadow Vehicle #1		Flashing Arrow Board (FAB) in caution mode
	Shadow Vehicle #2		Dynamic Message Sign (DMS)
	Buffer Vehicle		



BC ONE CALL
 CALL BEFORE YOU DIG
 1 800-474-6888
 VANCOUVER AREA
 604-257-1940

CONSTRUCTION	PERMIT	DESIGN DM	DR DM
REV. DESCRIPTION	SUBMITTED DATE	264-529-1362	SCALE: NTS
REV. DESCRIPTION	REVISED DATE		DATE: 06/26/17
REV. DESCRIPTION	APPROVED DATE		ASSOCIATED DRAWINGS
REV. DESCRIPTION	DATE		
REV. DESCRIPTION	AS CONSTRUCTED DATE		
REV. DESCRIPTION	CONTRACTOR		

THE WORKS PROPOSED ON THIS DRAWING SHALL BE ALLIANCE BETWEEN THE PROPERTY OF TELUS
**PROPOSED TRAFFIC CONTROL LAYOUT
 TO ACCOMMODATE
 TELECOM CABLE PLACING AND SPLICING**
 LEDGESTONE PL AND ANNIS RD,
 CHILLIWACK, BC SYSTEM NAME:
 2659370
 SHEET 1